

**Tillbridge Solar Project  
EN010142**

**Volume 6  
Environmental Statement**

**Figure 12-12: Representative LVIA Viewpoints:  
Principal Site Only (With Bare Earth ZTV)  
Document Reference: EN010142/APP/6.3**

**Regulation 5(2)(a)  
Infrastructure Planning (Applications: Prescribed Forms and  
Procedure) Regulations 2009**

**April 2024  
Revision Number: 00**

**tillbridgesolar.com**





**PROJECT**  
 Tillbridge Solar Project

**CLIENT**  
 Tillbridge Solar Ltd

**CONSULTANT**  
 Aldgate Tower  
 2, Leman Street  
 London, E1 8FA  
 United Kingdom  
 T +44-0207-645-2000

**LEGEND**

- Order limits
- Representative LVIA Viewpoint
- Principal Site - 5km Buffer
- Cable Route Corridor - 1km Buffer
- Indicative Solar Panel Boundary

**Zone of Theoretical Visibility - Degree of Maximum Visibility of the Solar Panel Area**

	Not Visible
	1- 25%
	25 - 50%
	50 - 75%
	75 - 100%

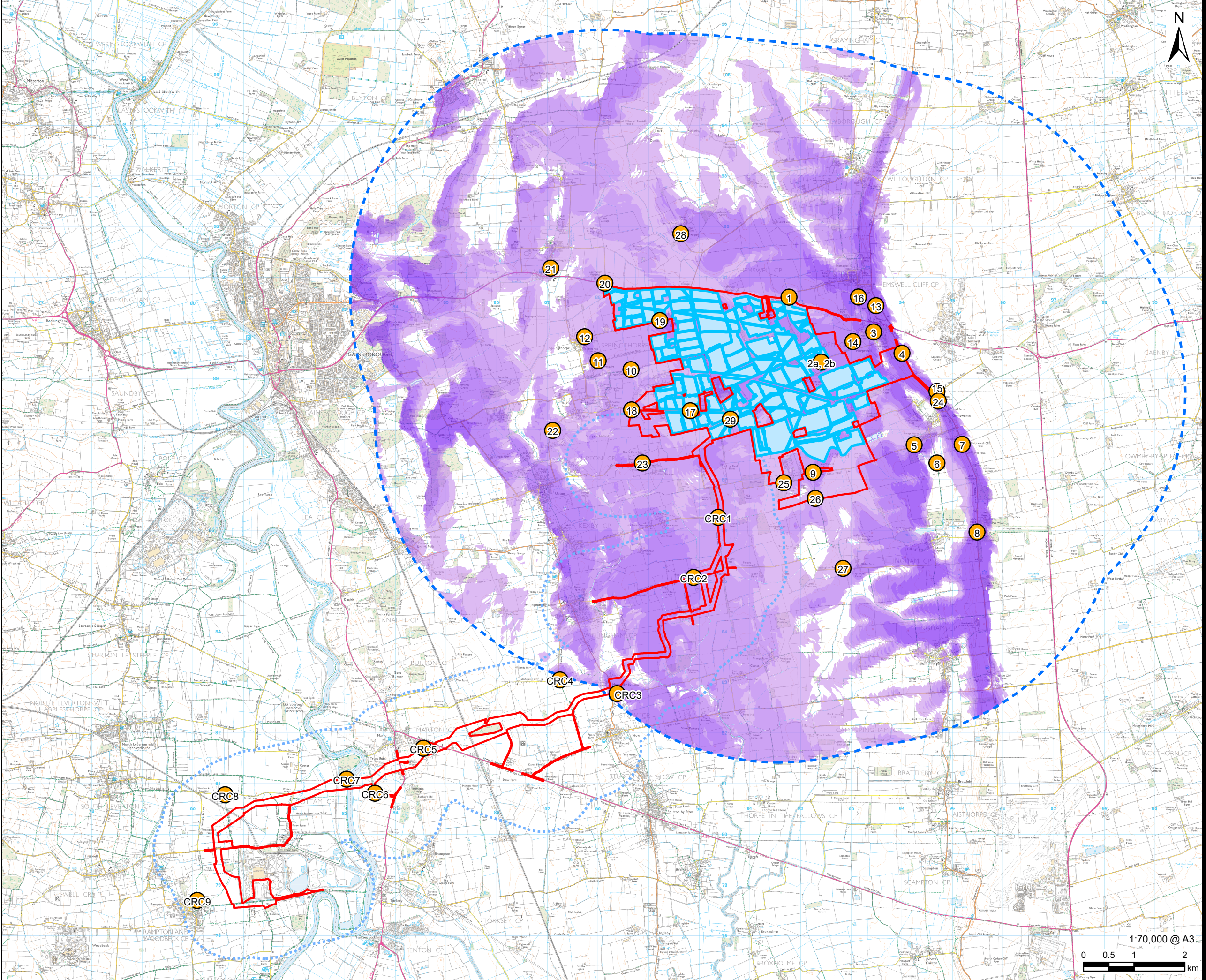
**NOTES**

1. The Zone of Theoretical Visibility (ZTV) is based upon points along the external boundary to the indicated solar panel area with an anticipated panel height of 3.5m and an observer height of 1.5m. It does not reflect all theoretical visibility arising from panels located within the external solar panel boundary.
2. The ZTV has been generated using Environment Agency Digital Terrain Model (DTM) with a 2m resolution.
3. The ZTV has been produced in order to inform 'on the ground' visual assessment and is based on a 'bare earth' model that does not include effects of screening derived from buildings or vegetation.
4. ZTV calculated using ArcGIS 10.8.1 Viewshed tool.
5. Contains Ordnance Survey Data © Crown Copyright and database right 2024. Ordnance Survey 0100031673.

**ISSUE PURPOSE**  
 DCO Submission  
**PROJECT NUMBER**  
 60677969

**FIGURE TITLE**  
 Representative LVIA Viewpoints:  
 Principal Site Only (with Bare Earth ZTV)

**FIGURE NUMBER**  
 Figure 12-12



This drawing has been prepared by the use of AECOM's client. It may not be used, modified, reproduced or relied upon by third parties, except as agreed by AECOM or as required by law. AECOM accepts no responsibility, and denies any liability whatsoever, to any party that uses or relies on this drawing without AECOM's express written consent. Do not scale this document. All measurements must be obtained from the stated dimensions.